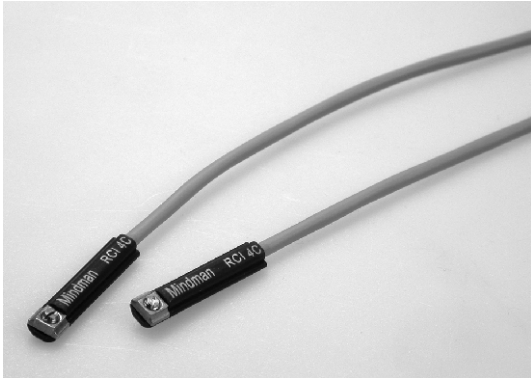
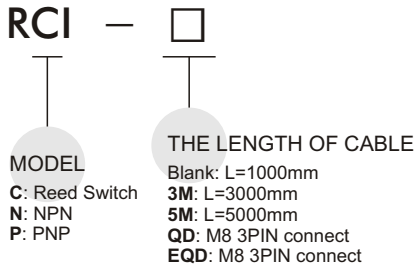


# RCI series

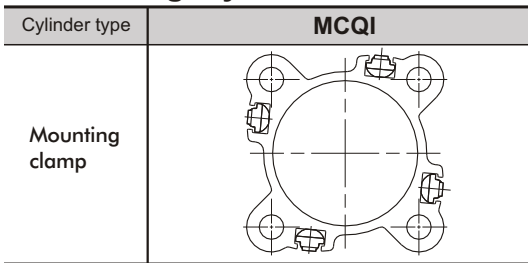
## SENSOR SWITCH



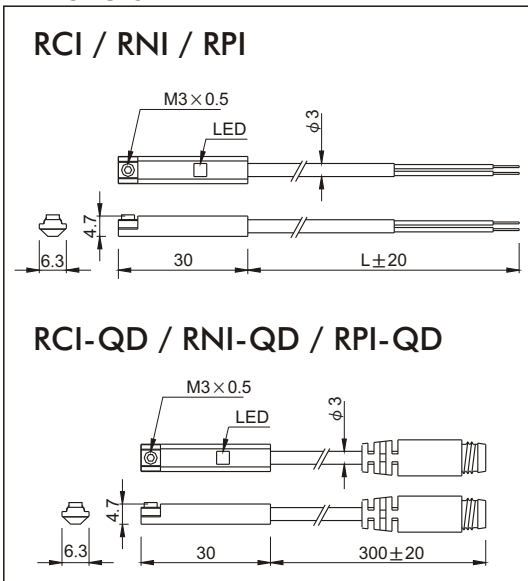
### Order example:



### Assembling style:



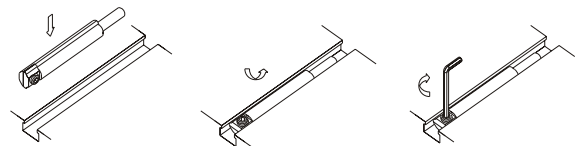
### Dimension



### Specification:

Model	RCI	RNI	RPI
Wiring	2 Wire	3 Wire	
Switch type	Reed switch	NPN current sinking	PNP current sourcing
Contracts	Normal open		
Voltage range	5~220V DC/AC	10~30V DC	
Current range	100mA Max.		
Shock resistance	30G	50G	
Voltage drop	3.0V Max.	2.0V Max	
Response time	MAX. 2ms	MAX. 1ms	
Temperature	- 10~70°C		
Lead wire	2C, 0.15mm <sup>2</sup>	3C, 0.15mm <sup>2</sup>	
Indicator lamp	LED lights up when ON		
Protection classification	ICE 529 IP67		
Indicator	Red LED	Red LED	Yellow LED
Current consumption	--	20 mA@24V Max	
Leakage current	--	0.05mA Max	
Vibration	90 m/s <sup>2</sup> (9G), Double Amplitude 1.5 mm		
Insulation resistant	DC 500V 100MΩ (Lead wire to case)		
Withstand voltage	AC 1000V (50/60Hz) 1 minute (Lead wire to case)		
Protection circuit	None	Yes	
Symbol			

### Mounting :



### M8 QD Pinout

